



WK742

Men's two-tone work trousers

- Comfortable, hard-wearing and trendy.
- Its practical design has lots of pockets for ample storage space.
- Cordura® backing on the knees.

65% polyester / 35% cotton. Wash at 60°C. Straight fit. 2 front pockets (bags made of the main material), 1 with small inner pocket closed with contrasting flap (except on black colourway). 2 gusseted hanging cargo pockets and contrasting flap (except black colourway) with velcro fastening, 1 of which with 2 compartments and slots for tools. 2 back pockets with flaps and velcro fastening, 1 hammer loop on the left when worn. 2 Cordura knee pad pockets in contrasting colour (black for all colourways) with velcro and flap inside to support and adapt the knee pad. Waistband with loops. Attached plastic ring on the waistband on the front left when worn. Zip and button fastening (metal plastic-covered button). Twin-needle stitching on side seams, triple stitching on front + back crotch seams. Knee pad not provided. Ribbed overstitched crotch. Inside leg 80 cm, hem 5 cm. Detachable brand label.

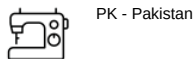


More information

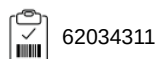
Logistic



Country of origin



Customs code



Washing instructions

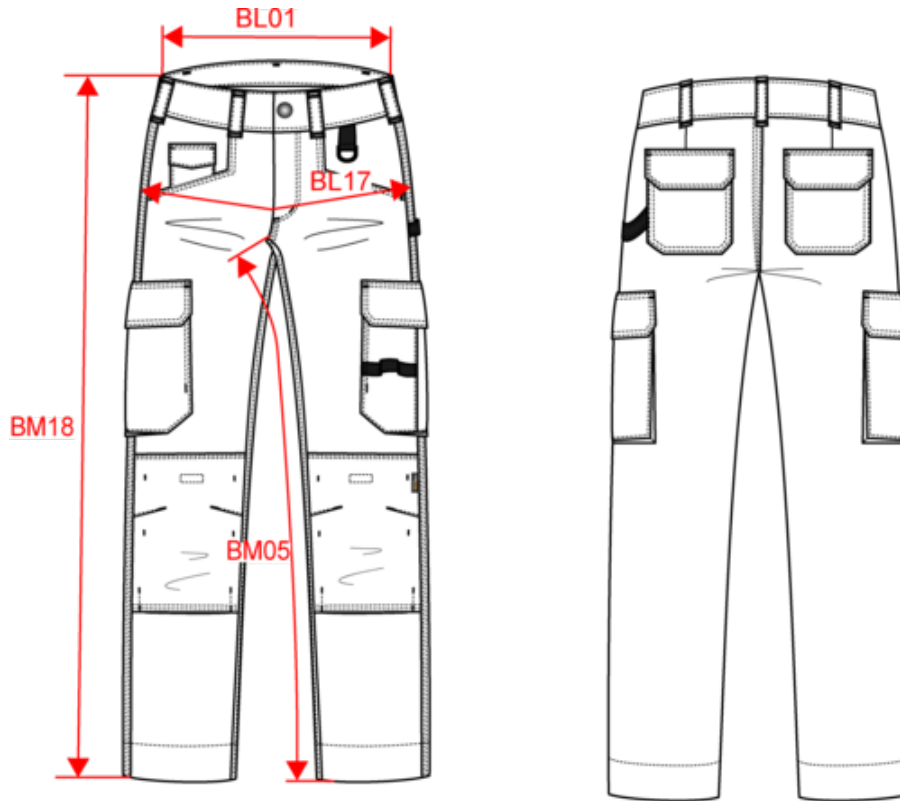


46 L

WK742

Men's two-tone work trousers

Dimensions (cm)





| Measurements in cm | 36 | 38 | 40 | 42 | 44 | 46 | 48 | 50 | 52 | 54 | 56 | 58 |
|--|--------|--------|--------|--------|--------|--------|--------|--------|--------|--------|--------|--------|
| BL01 - 1/2 waist width (buttoned up and front band over back band) | 40.00 | 42.00 | 44.00 | 46.00 | 48.00 | 50.50 | 53.00 | 55.50 | 58.00 | 60.50 | 63.00 | 65.50 |
| BL17 - 1/2 hip width (measured parallel to waistband) | 49.00 | 51.00 | 53.00 | 55.00 | 57.00 | 59.00 | 61.00 | 63.00 | 65.00 | 67.00 | 69.00 | 71.00 |
| BM05 - Inseam length | 80.00 | 80.00 | 80.00 | 80.00 | 80.00 | 80.00 | 80.00 | 80.00 | 80.00 | 80.00 | 80.00 | 80.00 |
| BM18 - Side length (waistband included) | 106.00 | 106.50 | 107.00 | 107.50 | 108.00 | 108.50 | 109.00 | 109.50 | 110.00 | 110.50 | 111.00 | 111.50 |



WK742

Men's two-tone work trousers

Colours information

Logistic  1  15

| Sizes | Width (cm) | Height (cm) | Length (cm) | Net weight (kg) | Gross weight (kg) | Pieces/Box | Pieces/Bundle |
|-------|------------|-------------|-------------|-----------------|-------------------|------------|---------------|
|-------|------------|-------------|-------------|-----------------|-------------------|------------|---------------|

| Taille fabricant | Pays-Bas | Italie | Portugal | Espagne | Royaume-Uni | Allemagne |
|------------------|----------|--------|----------|---------|-------------|-----------|
| 36 FR | 42 NL | 40 IT | 36 PT | 36 ES | 26 UK | 42 DE |
| 38 FR | 44 NL | 42 IT | 38 PT | 38 ES | 28 UK | 44 DE |
| 40 FR | 46 NL | 44 IT | 40 PT | 40 ES | 30 UK | 46 DE |
| 42 FR | 48 NL | 46 IT | 42 PT | 42 ES | 32 UK | 48 DE |
| 44 FR | 50 NL | 48 IT | 44 PT | 44 ES | 34 UK | 50 DE |
| 46 FR | 52 NL | 50 IT | 46 PT | 46 ES | 36 UK | 52 DE |
| 48 FR | 54 NL | 52 IT | 48 PT | 48 ES | 38 UK | 54 DE |
| 50 FR | 56 NL | 54 IT | 50 PT | 50 ES | 40 UK | 56 DE |
| 52 FR | 58 NL | 56 IT | 52 PT | 52 ES | 42 UK | 58 DE |
| 54 FR | 60 NL | 58 IT | 54 PT | 54 ES | 44 UK | 60 DE |
| 56 FR | 62 NL | 60 IT | 56 PT | 56 ES | 46 UK | 62 DE |
| 58 FR | 64 NL | 62 IT | 58 PT | 58 ES | 48 UK | 64 DE |